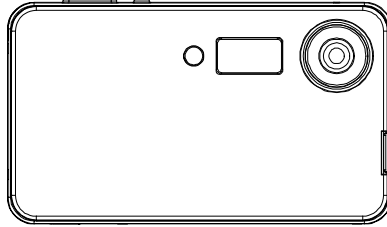




ULTRA THIN 3.2 MEGA PIXEL DIGITAL CAMERA



OWNER'S MANUAL

KT7009A

Introduction

We have taken great care to make sure that this unit was in perfect working order when it left factory. It has been designed to give you many years of enjoyment and trouble free operation. Read this manual before operating this unit to become familiar with its features and obtain the performance that will bring you continued enjoyment for many years.

You can use your Hello Kitty Digital Camera to capture not only snaps of your family and friends, but also video clips of them in action! Upload the images and video clips to your PC (running Windows[®] 98SE, ME, 2000 or XP).

Please note that your images and videos are stored in your Hello Kitty Digital Camera's internal memory. After you have taken your images and videos, the Hello Kitty Digital Camera will wait for certain time (selectable by user) and then automatically switch off. A constant trickle of power from the battery keeps the images and video stored in memory. When the Battery Indicator on LCD Display blinks, at this time all stored images and videos must be uploaded to your computer and saved, otherwise they will be lost.

For future reference, record the serial number in the space provided.

Model Number: **KT7009A**

Serial Number: _____

SAFETY PRECAUTIONS

- Before using the camera, please ensure that you read and understand the safety precautions described below. Always ensure that the camera is operated correctly.
- The safety precautions noted on the following pages are intended to instruct you in the safe and correct operation of the camera and its accessories to prevent injuries or damage to yourself, other persons and equipment.

WARNINGS

- Do not point the camera directly into the sun or at other intense light source that could damage your eyesight.
- Do not trigger the flash in close proximity to human or animal eyes. Exposure to the intense light produced by the flash may damage eyesight. In particular, remain at least 39 inches (1 meter) away from infants when using the flash.
- Store this camera out of the reach of children and infants. Accidental damage to the camera by a child could result in serious injury. In addition, placement of the strap around the child's neck could result in asphyxiation.
- Do not attempt to disassemble or alter any part of the camera that is not expressly described in this guide. Disassembly or alteration may result in high-voltage electrical shock. Internal inspections, alterations and repairs should be only be conducted by qualified service personnel authorized by your camera distributor.
- To avoid the risk of high-voltage electrical shock, do not touch the flash portion of the camera if it has been damaged. Similarly, never touch internal portions of the camera that become exposed as a result of damage. There is a risk of high-voltage electrical shock. Please consult your camera distributor for repair.
- Do not allow the equipment to come into contact with, or become immersed in, water or other liquids. Do not allow liquids to enter the interior of the camera. The camera is not waterproof. If the camera exterior comes into contact with liquids or salt air, wipe it dry with a soft, absorbent cloth. In the event that water or other foreign substances enter the interior, immediately turn the power off or unplug the power cord from the electrical outlet. Continued use of the equipment may result in fire or electrical shock. Please consult your camera distributor for repair.
- Do not use substances containing alcohol, benzene, thinners or other flammable substances to clean or maintain the equipment. The use of these substances may lead to fire or could permanently damage the camera.

CAUTIONS

- Avoid using, placing or storing the camera in places that are subject to strong sunlight or high temperatures, such as a car dashboard or trunk. Exposure to intense sunlight and heat may cause the internal batteries to leak, overheat or explode, resulting in possible fire, burns or other injuries. High temperatures may also cause the case to warp and deform. Ensure that there is good ventilation when using the compact power adaptor to charge or power the camera.
- Do not store the camera in humid or dusty areas. Storage in such areas can damage the internal circuitry and could lead to fire, electrical shock or other damage.
- When wearing or holding the camera by the strap, be careful not to drop or subject it to strong impacts or shocks that could lead to personal injury or possibly damage the camera.
- Be careful not to cover the flash with your fingers when shooting. In addition, do not touch the surface of the flash after taking several pictures in rapid succession. Either action could result in burns.
- If your camera is used for a prolonged period of time, the camera body may become warm to the touch.

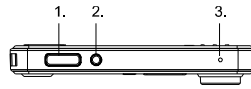
Preventing Malfunctions

- **Avoid Strong Magnetic Fields**
Never place the camera in close proximity to electric motors or other equipment generating strong electromagnetic fields. Exposure to strong magnetic fields may cause malfunctions or corrupt image data.
- **Avoid Condensation Related Problems**
Moving the equipment rapidly between hot and cold temperatures may cause condensation (water droplets) to form on the cameras external and internal surfaces. You can avoid this by placing the equipment in an airtight, re-sealable plastic bag and letting it adjust to temperature changes slowly before removing it from the bag.
- **If Condensation Forms Inside the Camera**
Stop using the camera immediately if you detect condensation. Continued use may damage the equipment. Remove the SD card from the camera and wait until the moisture evaporates completely before resuming use.

Location of Controls

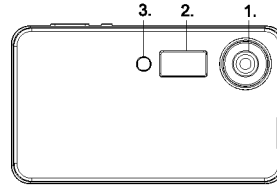
Top View

1. Shutter (OK) button
2. Power On/Off Button
3. Reset Hole



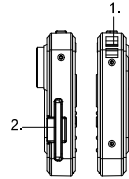
Front View

1. Lens
2. Flash Strobe Window
3. Self-timer LED




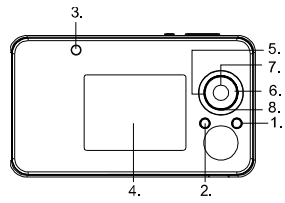
Right Side

1. Strip holder
2. SD Card slot



Back view

1. Mode button
2. Menu button
3. Power / Flash / Charging Status LED (Bi-color)
4. LCD Screen
5. Left () key
6. Right (Disp) key
7. Up (Zoom In) key
8. Down (Zoom Out) key



Bottom View

1. USB jack

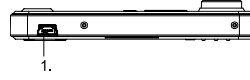


Table of Contents

1. Getting Started	10
• What Can I do with my Camera?	10
• What can I do with my Digital Pictures?	10
• What can I do with my Video clips?	10
• Camera Package Contents	11
• Insert and remove SD (Secure Digital) Card	11
• Turning the Camera On and Off	12
• Checking the Battery Level	12
• Charging the internal Lithium Battery	12
• Camera Mode Selection	13
2. Camera Settings	14
• Checking Camera Status	14
• Setting Date & Time	15
• Setting Language	15
• Format Storage	15
• USB Connection	16
• Setting Auto Power off	16
• Setting Light Frequency	16
• Setting Default	17
• System Information	17
3. Taking Pictures	18
• Taking a Picture	18
• Taking Picture under dim light	18
• Taking Pictures with Flash Strobe	18
• Taking Picture with Digital Zoom	18
• LCD Display ON/OFF	19
• Setting Picture Quality	19
• Setting Exposure Value	20
• Setting White Balance	20
• Setting Single / Multiple Snapshot	21
• Setting Self-timer	21
• Setting Time Stamp	22
4. Recording Video Clips	23
• Recording a Video Clip	23

●	Recording Video with Digital Zoom	23
●	LCD Display ON/OFF	23
●	Setting Video Quality	23
●	Setting Exposure Value for Video Recording	24
●	Setting White Balance for Video Recording	24
5.	Reviewing Pictures and Video clips	26
●	Thumbnail Display and Viewing	26
●	Viewing Pictures with Digital Zoom	26
●	Viewing Video Clip	26
●	Slide Show	27
●	Delete File	27
●	Delete ALL	28
●	Protect (Lock) Picture / Video file	28
●	Digital Print ordering on Printer via SD Card	28
6.	Computer System Requirement	29
7.	Hello Kitty Studio (For Windows® User Only)	30
●	How to Install Hello Kitty Studio	30
●	Uninstalling your Hello Kitty Studio	30
●	How to Install Hello Kitty Camera Driver	30
●	Uninstalling Camera Driver (for Windows® Users Only)	31
●	How to Use Hello Kitty Studio	31
8.	Installing the Software to your Computer	34
●	Installing the Software	34
●	Software Included with your Camera	36
9.	Transferring Pictures and Video Clips to a Computer	37
10.	Using the Camera as a Web Cam (for Windows® Users Only)	38
11.	Troubleshooting Guide	39
12.	Appendix	41
●	Regulatory Information	41
13.	Specifications	42

14. Care and Maintenance	43
15. Getting Help	43

1. Getting Started

What can I do with my Camera?

Capture



Enjoy point-and-shoot operation. Store pictures and video clips to a SD card.

Set Up



Select various camera settings.

What can I do with my Digital Pictures?

View



View the pictures on a computer.

Save



Save the pictures to a computer memory by Mass Storage interface.

E-mail



Send the pictures over the Internet to family and friends.

What can I do with my Video clips?

Playback
Application



Play back of video clips on a computer using your system default video.

Save



Save video clips to the computer memory by Mass Storage interface.

E-mail



Send the video clips over the Internet to family and friends.

Camera Package Contents



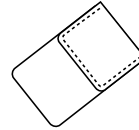
Warranty Card



USB Cable



User Manual



Carrying Case



CD-ROM



Neck strap

CDROM contains the following software:

- a.) Hello Kitty Studio
- b.) PC Camera Driver (for Windows ® users)
- c.) ArcSoft PhotoStudio Application software. (for Windows ® users)

Inserting the SD (Secure Digital) Card

This camera has 16MB of internal memory, but it's recommended you use a larger capacity SD card if you would like to take more pictures and longer videos. If inserting an SD card before taking pictures or recording video clips, then the SD card is default storage media. Turn off the camera before inserting or removing the SD card. Be sure to orient the card correctly when inserting it. Never try to force the SD card into the slot when you feel resistance. The SD card has a write protect switch, which you can use to prevent data from accidental deletion; therefore, disable the write protection beforehand whenever you want to record, format or delete files in the SD card.

1. Power off the camera and turn the camera SD Card slot faces you.
2. Inserting the SD card, ensuring you orient it correctly — please see the silkscreen beside the SD card socket. To remove the SD card, push the SD card inside and the SD card is released from the slot.
3. Power on the camera again and ready for picture shoot or video recording.



IMPORTANT:

- The camera will be turned off automatically for protection if SD Card is inserted or removed when the camera power is on.
- Never insert any other object which is not SD card into the camera's SD card slot. Doing so will create the risk of damaging to the camera and the card.
- Make sure that the terminals of the SD card are facing towards the same side of the LCD.
- Should water or any foreign object ever get into the card slot, immediately turn off the camera and then contact your dealer or nearest service provider.

Turning the Camera On and Off

To turn on the camera, fully press and hold the Power button until the power indicator lights up. Press and hold the Power button again to turn off the camera.

Checking the Battery Level

Check the battery power level before taking pictures.

1. Turn on the camera.
2. Check the battery status level that appears on the LCD screen.



Batteries have adequate power.




Batteries have only limited power to support in a short time.



When running out of battery power, the icon will blink for 5 seconds and camera will be turned off automatically. This indicates the battery need to be recharged.

Charging the internal Lithium Battery

A rechargeable battery is integrated in the camera. When the camera displays  icon in blinking and is turned off automatically, it means all the battery energy is used up. Please follow the following steps to recharge the battery.



IMPORTANT:

- **Battery charging is active only when the camera power is switched off.**
- **It is normal that the camera feels slightly warm while recharging the internal battery.**

Recharging the Battery with the USB Port of your PC:

1. Switch off the camera.
2. Connect the camera to the USB Port on your PC with the USB cable (included). The charging indicator will light red.
3. After a period of time, the charging indicator will turn off. That means the battery has been fully charged.
4. Disconnect the camera from your PC and then remove the USB cable.



Note:

1. The camera will be switched off automatically for battery charging if the USB cable from PC is inserted when the camera power is on.
2. Please fully recharge the built-in battery for up to 10 hours before you use the camera for the first time after purchase. The internal battery should last for the life of the camera, but as is the case with all rechargeable batteries the actual charge held may decline with use.

Camera Mode Selection

Turn on the camera, press "Mode" button to the main menu of camera.
















User can select the mode of camera for "Photo Snapshot", "Video Recording", "Photo & Video Playback" and "Camera Configuration".

2. Camera Settings

Checking Camera Status

Turn on the camera, and view the camera LCD screen to check which camera settings are active. If the feature icon is not displayed, it means that particular feature is not activated.

Image Quality	Camera Status	Other Features
Image Resolutions H High: 2048 x 1536 M Medium: 1600 x 1200 L Low: 800 x 600	Flash Tube condition  Auto  On  Off	 Self-timer  Video Recording mode
Video Resolutions  CIF 320 x 240  VGA 640 x 480	 Photo Capture mode 1.00 - 4.00 Zoom in/out	0015 / 0017 Number of picture displayed
Battery Status  Full  Low level  Empty	 SD Card inserted 0003  Pictures can be taken	

Setting Date & Time



The current date and time can be recorded, and stored with the images or video clips. It is also be used to make Date / Time Stamp on picture.

You can change the Date & Time setting by the following steps:

Turn on the camera, press "Mode" button and select "Configuration" Menu.

Select "Date & Time Setting", then use "Up" and "Down" key to increase and decrease the setting value. Use "Left" and "Right" key to choose setting item "mm", "dd", "yyyy" and "hour", "min", "sec".

Setting Language



Under this setting, you can select the language you prefer for the LCD screen.

English
日本語 (Japanese)
简体中文 (Simplified Chinese)

Turn on the camera, press "Mode" button and select "Configuration" Menu. Go down to "Language", then use "Left" and "Right" key to choose the language.

Format Storage



Formatting the SD Card or on board memory will erase all pictures and video clips, remove the SD card during formatting may damage the card.

You can format the storage media by following steps:

Turn on the camera, press "Mode" button and select "Configuration" Menu. Go down to "Format Storage", press "OK" button to select format storage media function. Confirm to format start, press "OK" button. Otherwise, press "Menu" button to return menu without format.

Yes **OK** No **MENU**

During format, the LCD displays "Formatting Please Wait".

Formatting
Please Wait.

After format, the menu is back again. In the Playback mode, LCD will show "NO IMAGE" on screen.



No Image

USB Connection



To check the available USB connection, it can be performed by following steps:

Turn on the camera, press "Mode" button and select "Configuration" Menu.
Go down to "USB Connection", the available USB connection is indicated on LCD.
Use "Left" and "Right" key to choose between "PC Cam" and "Mass Storage" mode for USB connection.

Setting Auto Power Off



Your camera is designed to switch off automatically after 1 minutes of inactivity. You can change the Auto

power off setting by the following steps:

Turn on the camera, press "Mode" button and select "Configuration" Menu.
Go down to "Auto Power Off", then use "Left" and "Right" key to choose "30 sec", "1 Min", "3 Min" or "5 Min".

Setting Light Frequency

In order to take a better indoor picture, the camera needs to be set to suit the correct lighting frequency. Set the frequency to 60Hz for USA and Japan, and 50 Hz for Europe and Asia.



50Hz Frequency



60Hz Frequency

Turn on the camera, press "Mode" button and select "Configuration" Menu.
Go down to "Light Freq.", select between "50Hz" and "60Hz" light frequency.

Setting Default

The camera settings can restore to factory default by following steps:
Turn on the camera, press "Mode" button and select "Configuration" Menu.
Go down to "Default Setting", press "OK" button to allow camera setting restore to factory default.

System Information

The camera firmware version can be obtained by following steps:
Turn on the camera, press "Mode" button and select "Configuration" Menu.
Go down to "System Info.", press "OK" button and the camera firmware version will be displayed.

3. Taking Pictures

Taking a Picture



1. Turn on the camera and make sure it is in Capture mode. Now is ready to take pictures.
2. Frame your subject using the LCD screen.
3. Press the Shutter button to take a picture, holding the camera steadily. One beep will sound when the picture has been taken.

Taking Picture under dim light



When the picture for shoot is not bright enough, the picture may be captured with blur image if the camera is held by hand. Hand shaking icon is blinking on LCD as an alert to user. Fixed the camera firmly in place, turn camera viewing to brighter direction or turn on flash strobe can prevent capturing with blur image.

Taking Pictures with Flash Strobe

Normally the outdoor and indoor pictures are taken under the "Off" flash mode as it is the default setting. If the background is too dark, the user needs to turn the flash strobe on and off manually for background requirement.

Turn on the camera and make sure it is in Capture mode.

Press "Left (⚡)" key and select between "Auto", "On" and "Off" flash mode.

Flash mode setting will be displayed on LCD.



Auto On Off

During flash is charging and not ready, the charging LED is blinking and LCD screen is turned off in order for full energy charging.

Taking Pictures with Digital Zoom

The camera is designed with 4x digital zoom in both still image mode and video mode. This feature lets you zoom in on the center area of a photo and photograph only the enlarged portion of the picture.

Digital zoom applies to all still pictures until you manually turn it back, and can be continuously in video mode.



Zoom +



Zoom -

Turn on the camera and make sure it is in Capture mode.

Press the "Up (Zoom In)" or "Down (Zoom Out)" key to zoom in and out.

LCD Display ON/OFF

The LCD can be turned on or off manually according to the desire from user. It can save battery energy when the LCD is turned off.

Turn on the camera and make sure it is in Capture mode.

Press the "Right (Disp)" key to turn "Disp ON with OSD", "Disp ON without OSD" or "Disp OFF".

Setting Picture Quality

L M H

Picture quality depends on both its resolution and the JPEG file compression that the camera applies when the picture is taken. Higher resolution make better quality which occupies more memory space. Smaller size pictures in lower resolution are easier to email, while larger size pictures in higher resolution are better for printing.

Turn on the camera and make sure it is in Capture mode.

Press "Menu" button and use "up"/ "down" button till the cursor on "Picture Quality" in the menu on the LCD Screen, then use "Left" and "Right" to choose the size you prefer (800x600, 1600x1200, 2048x1536).

Here is the approximate number of pictures you can expect the camera to hold based on the 16MB NAND FLASH Memory:

- L** 800x600: Low resolution approximately 116 pictures.
- M** 1600x1200: Medium resolution approximately 28 pictures.
- H** 2048x1536: High resolution approximately 17 pictures



Note: The numbers are also be influenced by the complexity of the picture.

Scene complexity affects a picture's file size. For example, the file size of a picture with trees in autumn is larger than that of the blue sky at the same resolution setting. Therefore, the number of pictures you can store in the memory may vary.

Setting Exposure Value

Similar to white balance, sometimes to obtain better image quality, the user can use manually select the exposure accompanied with the white balance.



Current in this camera, there are 9 exposure value offset levels: from -2 till +2, 0.5EV each step. To manually select the exposure level, please do as following.



Turn on the camera and make sure it is in Capture mode.

Press "Menu" button and use "up"/ "down" button till the cursor on "Exposure Value" in the menu on the LCD Screen, then use "Left" and "Right" to choose the EV setting you prefer. In normal condition, the EV is set to "0".

Setting White Balance

The sensor of the camera has different light sensitivity in different circumstances. The camera has designed to have auto white balance function. However, it also has the feature to let the user to select the white balance mode in daylight, cloudy, tungsten and fluorescent to get the best image quality performance. To change the white balance mode, the user need:

Turn on the camera and make sure it is in Capture mode.

Press "Menu" button and use "up"/ "down" button till the cursor on "White Balance" in the menu on the LCD Screen, then use "Left" and "Right" to choose "AWB", "Sunny", "Cloudy", "Tungsten", "Fluorescent 1" and "Fluorescent 2".



Apply "Fluorescent 1" under traditional fluorescent lamp.
Apply "Fluorescent 2" under high intensity fluorescent lamp.
Apply "AWB" for auto white balance setting or when you are not sure what is the best option to set.

Setting Single / Multiple Snapshot

The shutter button can act as a normal shutter for single picture shooting. This camera also supports multiple shooting by a single shutter key press.



Single Snapshot



Burst Snapshot

Turn on the camera and make sure it is in Capture mode.

Press "Menu" button and use "up/" "down" button till the cursor on "Burst Snapshot" in the menu on the LCD Screen, then use "Left" and "Right" to choose between "Single" or "Burst" snapshot.

The multiple snapshot operates with 3 picture capturing sequentially. It supports only with 800x600 resolution picture.

Setting Self-timer

Your camera is designed with a self-timer function, which allows you to take pictures with built-in timer.

Turn on the camera and make sure it is in Capture mode.

Press "Menu" button and use "up/" "down" button till the cursor on "Self timer" in the menu on the LCD Screen, then use "Left" and "Right" to choose self-timer interval setting of "OFF", "10 sec", "15 sec" or "20 sec".



Press "Menu" button again to exit menu setting. Next time while taking a picture, the camera will count

down the time interval after the shutter key pushed for photo taking. The Self-timer function is only applied to next picture. When the self-timer is activated, the camera beeps and the self-timer LED turns red and blinks for each second during count down before the picture is taken. Please place the camera on a flat surface or use a tripod.

Setting Time Stamp

Time Stamp can be imprinted on the picture. "Date Only" or "Date & Time" can be selected.

Turn on the camera and make sure it is in Capture mode.

Press "Menu" button and use "up"/ "down" button till the cursor on "Time Stamp" in the menu on the LCD Screen, then use "Left" and "Right" to choose "OFF", "Date Only" or "Date & Time".



Time Stamp: OFF



Time Stamp: Date Only



Time Stamp: Date & Time

4. Recording Video Clips

Recording a Video Clip



1. Turn on the camera and make sure it is in Video Recording mode. Now is ready to record video.
2. Frame your subject using the LCD screen.
3. Press the Shutter button to start video recording.
4. The recorded time appears on the LCD for recorded video.
5. Press the Shutter button again to stop the video recording if you complete, or memory full.



Before recording a video clip, make sure the memory has adequate free space.



Note: Audio is not included on video recording so the recorded AVI file has not audio.

Recording Video with Digital Zoom

The camera is designed with 4x digital zoom in both still image mode and video mode. This features lets you zoom in on the center area of video and photograph only the enlarged portion of the picture. Digital zoom applies to all still pictures until you manually turn it back, and can be continuously in video mode.



Zoom +



Zoom -

Turn on the camera and make sure it is in Video Recording mode.

Press the "Up (Zoom In)" or "Down (Zoom Out)" key anytime to zoom in and out.

LCD Display ON / OFF

The LCD can be turned on or off manually according to the desire from user. It can save battery energy when the LCD is turned off.

Turn on the camera and make sure it is in Video Recording mode.

Press the "Right (Disp)" key to turn "Disp ON with OSD", "Disp ON without OSD" or "Disp OFF".

Setting Video Quality

Higher resolution make better quality which occupies more memory space. Smaller size videos in lower

resolution are easier to email, while larger size videos in higher resolution are better for viewing quality.



CIF: 320x240

VGA: 640x480

Turn on the camera and make sure it is in Video Recording mode.

Press "Menu" button and use "up"/ "down" button till the cursor on "Video Resolution" in the menu on the LCD Screen, then use "Left" and "Right" to choose between the resolution of CIF (320x240) or VGA (640x480).

Setting Exposure Value for Video Recording



Similar to white balance, sometimes to obtain better image quality, the user can use manually select the exposure accompanied with the white balance.

Current in this camera, there are 9 exposure value offset levels: from -2 till +2, 0.5EV each step. To manually select the exposure level, please do as following.



Turn on the camera and make sure it is in Video Recording mode.

Press "Menu" button and use "up"/ "down" button till the cursor on "Exposure Value" in the menu on the LCD Screen, then use "Left" and "Right" to choose the EV setting you prefer. In normal condition, the EV is set to "0".

Setting White Balance for Video Recording

You may also set the White Balance during the Video Mode. The operation is identical to that in Capture mode. Once the White Balance is set, it influences both capture mode and Video mode.

The sensor of the camera has different light sensitivity in different circumstances. The camera has designed to have auto white balance function. However, it also has the feature to let the user to select the white balance mode in daylight, cloudy, tungsten and fluorescent to get the best image quality performance. To change the white balance mode, the user need:

Turn on the camera and make sure it is in Video Recording mode.

Press "Menu" button and use "up"/ "down" button till the cursor on "White Balance" in the menu on the LCD Screen, then use "Left" and "Right" to choose "AWB", "Sunny", "Cloudy", "Tungsten", "Fluorescent 1" and "Fluorescent 2".



Apply "Fluorescent 1" under traditional fluorescent lamp.

Apply "Fluorescent 2" under high intensity fluorescent lamp.

Select "AWB" for auto white balance setting or when you are not sure what is the best option to set.

5. Reviewing Pictures and Video Clips

Thumbnail Display and Viewing

Turn on the camera and make sure it is in Playback mode.

Press "OK" button to display 6 pictures of thumbnail for picture or video. Use "Up", "Down", "Left" and "Right" keys to select thumbnail for playback or go to next / previous thumbnail page. The cursor on selected thumbnail indicates icon to represent picture file or video file on the bottom. Press "OK" button for picture or video viewing.



Thumbnail of Picture file (JPG)



Thumbnail of Video file (AVI)

Viewing Pictures with Digital Zoom

The camera is designed with 4x digital zoom on captured pictures for viewing on LCD. This feature lets you zoom in on the center area of photo and photograph only the enlarged portion of the picture.



Zoom +



Zoom -

Turn on the camera and make sure it is in Playback mode.







Select picture file via thumbnail as procedure stated on thumbnail display.
Press the "Up (Zoom In)" or "Down (Zoom Out)" key to zoom in and out.

Viewing Video Clip

Turn on the camera and make sure it is in Playback mode.

Select video file via thumbnail as procedure stated on thumbnail display.

Use "Up" and "Down" keys to select following function for video playback.
Use "Left" and "Right" keys to select previous or next picture/video file.

-  Previous file ("Left" key)
-  Rewind
-  Pause
-  Normal playback
-  Fast forward
-  Next file ("Down" key)

Slide Show

A series of pictures can be viewed as slide show during playback.



Turn on the camera and make sure it is in Playback mode.

Press "Menu" button and use "up"/ "down" button till the cursor on "Slide Show" in the menu on the LCD Screen, press "OK" button to start the picture slide show. Press any key to stop the slide show.



Note: This function cannot use on video clips. To playback the video clips, please refer "Viewing Video Clip".

Delete File

Picture or Video file can be deleted as following steps.

Turn on the camera and make sure it is in Playback mode.

Press "Menu" button and use "up"/ "down" button till the cursor on "Delete" in the menu on the LCD Screen, press "OK" button to select delete file function. Confirm to delete, press "OK" button. Otherwise, press "Menu" button to return menu without delete file.

Yes **OK** No **MENU**

Delete All

All Picture and Video files can be deleted with a single step as described below.

Turn on the camera and make sure it is in Playback mode.

Press "Menu" button and use "up"/ "down" button till the cursor on "Delete ALL" in the menu on the LCD Screen, press "OK" button to select delete file function. Confirm to delete all, press "OK" button. Otherwise, press "Menu" button to return menu without delete any file.

Yes **OK** No **MENU**

Protect (Lock) Picture / Video file

File can be marked protect so as to prevent erase the file by "Delete" or "Delete All" function.



Turn on the camera and make sure it is in Playback mode.

Press "Menu" button and use "up"/ "down" button till the cursor on "Protect" in the menu on the LCD Screen, then use "Left" and "Right" to choose protect file "ON" or "OFF".

Digital Print ordering on Printer via SD Card

The camera supports DPOF function. User can mark the picture that is wanted for digital printing on printer function. After marked with digital print, the SD Card can be inserted into the printer that supports DPOF function for digital print only on those file marked with digital print "ON".



Turn on the camera and make sure it is in Playback mode.

Press "Menu" button and use "up"/ "down" button till the cursor on "Print" in the menu on the LCD Screen, then use "Left" and "Right" to choose file for digital print order "ON" or "OFF".

6. Computer System Requirement

For acceptable picture transfer and editing, following minimum requirement is recommended:

For Windows Users (PC)

- Compatible with Microsoft® Windows® 98SE, ME, 2000 or XP
- Pentium IV 1.2GHz or equivalent processor
- USB port
- 128MB RAM (256M recommended)
- 600MB free disk space
- 24 bit true colour graphic capability or above
- CD-ROM drive
- Standard mouse and keyboard

7. Hello Kitty Studio (For Windows® User Only)



IMPORTANT:

- Please backup all the necessary data before any driver/software installation.
- Our CD-ROM is tested and recommended to use under English Windows OS.
- MAKE SURE YOU INSTALL ALL THE SOFTWARE FROM THE CD SUPPLIED BEFORE YOU CONNECT YOUR CAMERA TO A COMPUTER.
- If the computer requests you to insert the windows set up CD during the software installation, place the Windows CD into the computer CD-ROM drive. The computer will install the necessary files from the CD automatically. After the installation is completed, remove the Windows setup CD and stored safely.

How to Install Hello Kitty Studio

1. Insert the CD-ROM disc into the CD-ROM drive and close the CD-ROM drawer.
2. Installation wizard will automatically launch.
3. Click the "Install Hello Kitty Studio Photo Fun & Games" icon.
4. Follow the instructions presented on the screen to complete the installation.
5. Click "OK" to complete the installation wizard.



Uninstalling your Hello Kitty Studio

1. Re-insert the CD-ROM disc into the CD-ROM drive and close the CD-ROM drawer.
2. Installation wizard will automatically launch.
3. Click the "Uninstall Hello Kitty Studio Photo Fun & Games" icon.
4. Follow the instructions presented on the screen to uninstall the Hello Kitty Studio.
5. Click "OK" to complete the uninstalling wizard.

How to Install Hello Kitty Camera Driver

1. Insert the CD-ROM disc into the CD-ROM drive and close the CD-ROM drawer.
2. Installation wizard will automatically launch.
3. Click the "Install Hello Kitty Camera Driver" icon.
4. Follow the instructions presented on the screen to complete the installation.
5. Click "OK" to complete the installation wizard.
6. Restart the computer.

Uninstall Camera Driver (for Windows® Users Only)

1. Unplug the camera from your PC
2. Go to Windows® Control Panel
3. Double click Add/Remove programs
4. In Add/Remove programs, select "STK014_V2.01" and click the remove button.
5. Restart the computer.

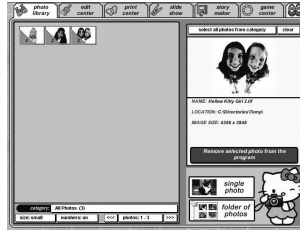
How to Use Hello Kitty Studio

Photo Library

Use the photo library to manage your photos. Use the import buttons to select and import photos into the Hello Kitty Studio program.

When photos are imported, they are organized by category. The categories correspond to the name of the folder where the original photo resides.

Once photos are imported, you can select one or more photos for editing or printing.



Edit Center

Use any of the 18 editing tools to modify your photo. Then save your edited photo for future use in the Hello Kitty Studio.

Note:

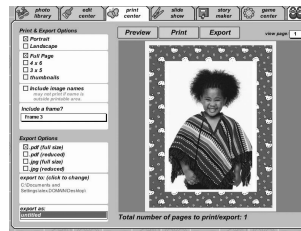
Your original photo will not be altered when you use the edit center.

Print Center

Select one or more photos from the Photo Library, then go to the print center to print or export them.

Hello Kitty Studio offers several printing formats and print options including layouts, image names and photo frames.

Use the export option in the print center to save a copy of the photo to your computer in .jpg or .pdf format. Choose the reduced option to create a smaller file that works better with e-mail.



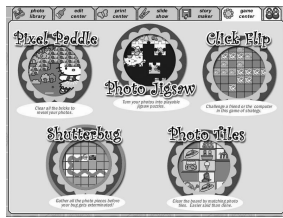
Slide Show

Select a category of Hello Kitty Studio photos for a slide show. Page through the photos one by one, or select the auto-play option to display the photos automatically.

Story Maker

Create a story using your Hello Kitty Studio photos. Then save your story or export it to your computer as a .jpg or .pdf file. Choose from 5 colorful Hello Kitty templates.





Game Center

Play 5 great games that use your photos in the game!
Choose from Pixel Paddle, Photo Jigsaw, Click Flip,
Shutter Bug or Photo Tiles.

8. Installing the Software to your Computer

Installing the Software

For Windows® Users:



IMPORTANT:

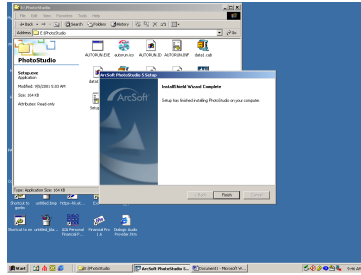
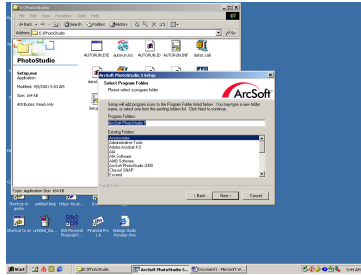
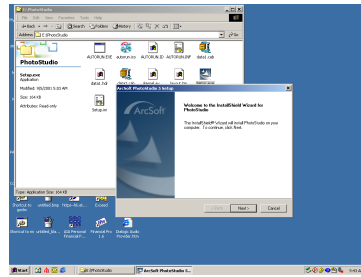
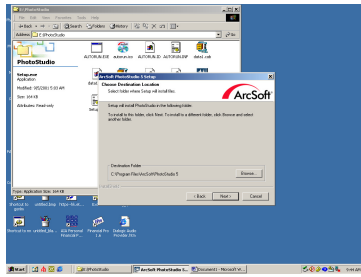
- Please backup all the necessary data before any driver/software installation.
- Our CD-ROM is tested and recommended to use under English Windows OS.
- **MAKE SURE YOU INSTALL ALL THE SOFTWARE FROM THE CD SUPPLIED BEFORE YOU CONNECT YOUR CAMERA TO A COMPUTER.**
- If the computer requests you to insert the windows set up CD during the software installation, place the Windows CD into the computer CD-ROM drive. The computer will install the necessary files from the CD automatically. After the installation is completed, remove the Windows setup CD and stored safely.

1. Before you begin, close all other software applications open on your computer.
2. Insert the CD supplied into the CD-ROM drive.
3. Click "Exit" to quit the auto run "Hello Kitty Studio".



4. Double-click the "Setup.exe" under "Photostudio" folder to start setup progress of the software and follow the on screen instructions till "Finish" choice on the screen. Please see the following graphs.

5. Click "Finish" to complete the installation of the software.



Software Included with your Camera

The software CD contains the following software:

1. PC Camera Driver (For Windows® Users Only)

This is a MS Windows driver for the camera. After installing this driver and restarting Windows, the digital camera can be used as a PC webcam function. It can link with common video capturing software.

2. Arcsoft PhotoStudio® 5

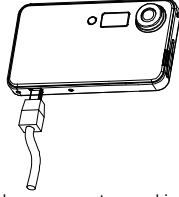
Arcsoft PhotoStudio® 5 is a full-featured, easy to use digital-editing program that provides a complete set of photo editing and retouching tools, plus a wide selection of special effects and enhancements, its powerful include a wide variety of input and output options, layers, multiple undo and redo functions, image management tools, editable text, multiple file format support and a lot more.

3. Hello Kitty Studio (For Windows® Users Only)

Hello Kitty Studio is designed for your complete Hello Kitty experience; you can print, email and share your Hello Kitty digital creations!

9. Transferring Pictures and Video Clips to a Computer

1. Make sure the USB Connection under the "Configuration" Menu has been set to "Mass Storage" mode. Otherwise, change it to "Mass Storage" according to the procedure described in "Camera Settings" chapter. Turn OFF the power of camera.
2. Connect USB cable to your computer USB port.
3. Connect other end of USB cable to the camera while the camera is power OFF.



For Windows Users (PC)

1. Turn on the camera and LCD displays a mass storage drive icon:



2. System will automatically recognize a MASS STORAGE drive.
3. Double click on "My computer" icon on your desktop and then you can see a "Removable Disk" drive
4. Double click on "Removable Disk" ->Double click on "DCIM"-> Double click on "100CRESI"
5. Double click on the images or videos to view.

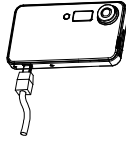
All the pictures and video clips are in the 100CRESI folder. Highlight the pictures and video clips that you choose and drag them into a folder of your choice. You can also create sub-folder to group them or use the image processing software to edit and manage pictures.

10. Using the Camera as a Web Cam (For Windows® Users Only)

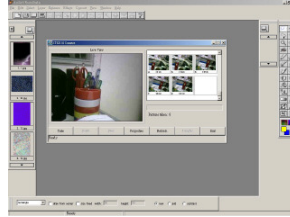
IMPORTANT: For Windows® Users

Before you connect your digital camera to the computer, make sure that you have installed the software from the enclosed CD. Please refer to previous chapter: "Install the software to your computer".

1. Make sure the USB Connection under the "Configuration" Menu has been set to "PC Cam" mode. Otherwise, change it to "PC Cam" according to the procedure described in "Camera Settings" chapter. Turn OFF the power of camera.
2. Connect USB cable to your computer USB port.
3. Connect other end of USB cable to the camera while the camera is power OFF.
4. Turn on the camera and LCD displays a PC Cam icon.



5. System will automatically recognize the PC Cam.
6. From Windows Startup Menu, click "Program", then -> "ArcSoft PhotoStudio 5" -> "PhotoStudio 5".
7. Click "File" and make sure the "Select Source" has selected "STK014 Camera". Click "Acquire" -> "Acquire normally". The window containing live video from PC Cam is appeared on screen.



11. Troubleshooting Guide

Problem	Symptom	Likely Cause	Solution
No power	Camera will not turn on	Battery is flat	Recharge the battery via USB
No sufficient power	The battery indicator icon on the LCD will go "Blank"	Battery voltage is low to the automatically shut down level	Charge the battery
Picture-taking	Image appears blurred or dark	The camera or subject was moving when the shot was taken	Hold the camera firmly
		The subject is too close	Move away from the subject
		The lens is dirty	Clean the lens with a soft cloth
	Flash does not go off as expected	Flash has not finished charging	Wait until the Flash icon is steady
		The flash has been turned off	Make sure the flash is set to Automatic or ON
	Camera will not focus	Subject is not in the center of the LCD (preview)	Move the subject to the center of the LCD (preview)
Cannot take pictures when the shutter button is pressed	Camera is not turned on	Turn on the camera	
	No space on the SD card / internal memory	Delete unwanted files or insert a new SD card	
	The camera has timed out	Turn the camera on	
Camera hang up during operation	Preview function can work, but no other key functions	Preview function occupy too large internal space of camera	Use a sharp end spurn to press reset hole.
PC Connection	PC does not recognize the camera	Check the USB cable connection	Make sure both ends of the USB cable are connected

		Interference from other USB devices Check computer	Disconnected other USB devices Connect the camera to the PC with the USB cable and select [My Computer] – [Control Panel] – [System] – [Device Manager]. In the [Device Manager] window delete [Compose USB device] or [Unknown device] in [Other devices]. Then disconnect the camera and install the software again.
Camera malfunctions during use	Electrostatic discharge interfered with the camera	Check if the camera is connected to the PC	Turn off the camera and then turn it back on. If connected to the PC disconnect the camera from the USB cord, and turn it off then on again.
The removable disk crashes with the network drive	The camera is detected by the Windows and works properly. But a driver letter of the removable disk is not created	Driver is not installed properly, or network driver connection is crash	Reinstall the driver, or disconnect the crashed network driver and reserve this drive letter for the camera
No response from any of the function keys	The LCD on camera has frozen when insert a SD card into the camera	SD card is first use and not formatted	Ensure you only use a new or Formatted SD card

12. Appendix

Regulatory Information

Under the environment with electrostatic discharge, the product may malfunction and require user to reset the product.

Under the environment with radio frequency interference, the product may malfunction and resume to normal operation without the interference.

13. Specifications

Resolution (pixels)	:	High – 2048 X 1536 Medium – 1600 X 1200 Low – 800 X 600
Shutter Speed	:	1 second to 1/1000 second
Image File Format	:	Still Images – JPEG (Exif 2.2) Movies – AVI without audio (for Windows® Users Only)
Internal Memory	:	16 MB Flash Memories
External Memory	:	SD Memory Card (maximum 256MB) (not included)
Lens	:	Fixed Lens – 8.4mm Effective Focal Length
Digital Zoom	:	4X
Exposure	:	Automatic
White Balance	:	Auto, Sunny, Cloudy, Fluorescent, Tungsten
Sensitivity	:	ISO 100
LCD	:	2.0" TFT
Interface	:	USB v1.1
Self Timer	:	OFF / 10 / 15 / 20sec Selectable
Flash Function	:	Auto / On / Off
Operation System	:	Windows® 98SE / ME / 2000 / XP
Auto Power Off	:	30sec / 1 / 3 / 5min Selectable
Power Source	:	Built-in Rechargeable Battery or 5V DC from USB Port
Operating Temperature	:	10°C - 40°C
Operating Humidity	:	20% - 85% Non-condensing

*NOTE: Scene complexity affects an image's file size. The number of images you can store on the camera or memory card may vary.

14. Care and Maintenance

Camera Body:

Wipe the body clean with a soft cloth or eyeglass lens wiper.

Lens:

First use a lens blower brush to remove dust and dirt, then remove any remaining dirt by wiping the lens lightly with a soft cloth.

Never use synthetic cleansers on the camera body or lens.

LCD Monitor:

Use a lens blower brush to remove the dust and dirt. If necessary, gently wipe the LCD monitor with a soft cloth or an eyeglass lens wiper to remove stubborn dirt.

Never rub or press forcefully on the LCD monitor. These actions may damage it or lead to other problems.

CAUTION: NEVER USE THINNERS, BENZENE, SYNTHETIC CLEANERS OR WATER TO CLEAN THE CAMERA. THESE SUBSTANCES MAY DISTORT OR DAMAGE THE EQUIPMENT.

15. Getting Help

Please refer to the instructions on the enclosed warranty card for returning your unit for service.

Distribuito in Italia da:
CAMOMILLA SPA
Via Bodoni 8/12
20090 Buccinasco (Mi)
Tel: +39-02-48840405
Fax: +39-02-48841725
E-mail: contatti@camomilla.it

Producer / Produzent / Producteur /

Produttore / Productor:

EAGLETRON TECHNOLOGY LTD



Stampato in Cina

AF10-16670-000L

